

FAST RESCUE BOAT WRH635FRB

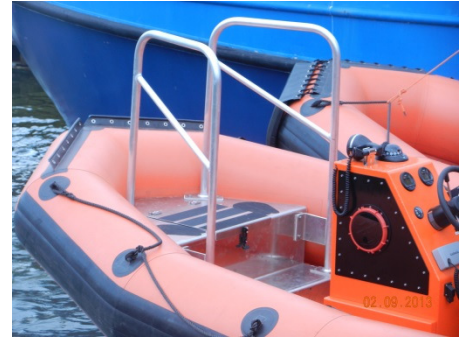


Introduction

The WRH635FRB has been the first model developed as a 15 persons Fast Rescue Boat for Survey and Stand-By Vessels.

Many years of experience operating and maintaining Fast Rescue Boats were used during the design and fabrication of the WRH635.

This model excels in operability, manoeuvrability, reliability and durability which is unique for this market.



All of the Fast Rescue Boats' critical items have been considered and has resulted in an ultra-strong hull, a well-protected Tube, very reliable electrical system and secure propulsion using two Yamaha outboard engines.

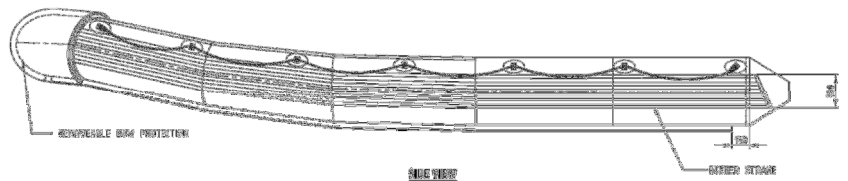
The WRH635 is self-bailing as the deck of the boat is above the water level, even while the boat is not running at speed. This is a unique system for this size of Fast Rescue Boats and increases its level of comfort.

The boat is certified according to Solas/MED. This means that the boat has been reviewed and tested against a variety of regulations. The test results have proved that this boat performed well above the minimum requirements.

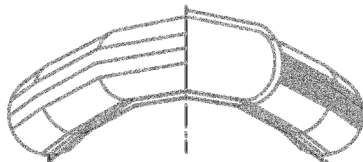
Buoyancy tube

The buoyancy tube is made of ORCA Neoprene-Hypalon fabric: Polyester High Tenacity 1670 dtex This fabric meets the highest level of weather proof, chemical and abrasion resistance.

The tube is constructed in 5 chambers, each chamber easy to inflate and deflate using its own valves. The tube is fabricated with the highest accuracy to ensure a



perfect seal

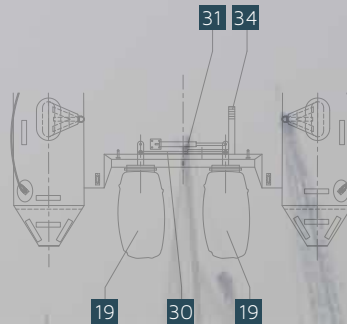
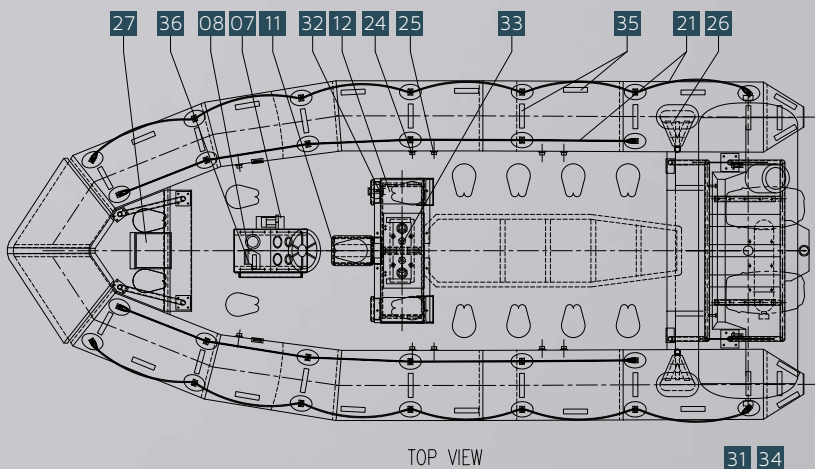
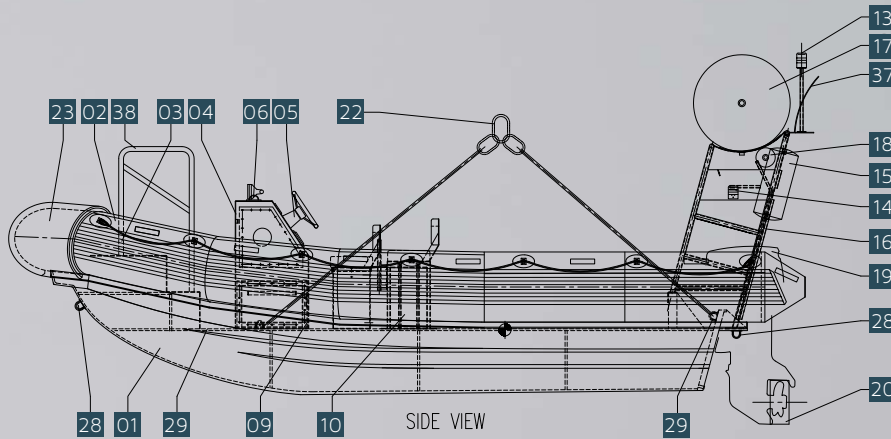


preventing any leaks. The sides are provided with a neoprene rubbing strake on both sides and the bow is provided with special bow protection.

Deep V hull construction

The hull is fabricated by hand lay-up lamination under the conditioned temperature and humidity levels. The hull has been built by using fire retardant polyester resin reinforced with specific glass fibre layers. This ensures for an extremely strong and rigid hull, unique on the market.

[GENERAL ARRANGEMENT SPECIFICATION] WRH635FRB



- 01 Polyester hull
- 02 Inflatable tube
- 03 Rubbing strake
- 04 Console with Instrumentation incl. waterproof VHF
- 05 Steering wheel
- 06 Compass
- 07 Throttle
- 08 Hand held search light
- 09 Console and battery box
- 10 Seat and fuel tank box
- 11 Coxswain seat
- 12 Crew seat
- 13 Mast head light
- 14 Port/Stbd lights
- 15 Radar reflector
- 16 Self righting frame
- 17 Inflatable self-righting bag
- 18 Gas bottle for self-righting bag
- 19 Yamaha outboard Engines
- 20 Propellor protector
- 21 Lifeline
- 22 Lifting sling (4-leg)
- 23 Bow protector
- 24 Inflation valve
- 25 Pressure safety valve
- 26 Tube/transom strap
- 27 Front deck cover, bowbox incl solas-equipment
- 28 SS Towing eye
- 29 SS Lifting eye
- 30 Tie bar
- 31 Hydraulic cylinder
- 32 Fire extinguisher
- 33 Fuel fill opening
- 34 Emergency steering handle
- 35 Reflection tape
- 36 Manually controlled search light (bulb 12V 50W)
- 37 VHF antenna
- 38 Board landing platform (option)

CAPACITY

Maximum number of persons 15 persons
 Maximum load 1.237,5 kg
 Max gross weight 2.612,5 kg
 (own weight and all loads)

Floor board useable area 7,5 m²
 Buoyancy tube volume 3,0 m³

DIMENSIONS

Overall length 6,35 m
 Inside length 5,40 m
 Overall beam 2,80 m
 Inside beam 1,65 m
 Weight empty incl. fuel and engines 1.375 kg
 Buoyancy tube diameter 0,57 m
 Number of buoyancy compartments 5
 Transom height 0,70 m

ENGINE POWER

Engine power 2 x 70 hp to 2 x 90 hp
 Engine weight 2 x 120 kg
 Propulsion Propellers
 Max. speed 35 knots

CONSTRUCTIONS

Hull Fire retardant GRP
 Tube ORCA 866 1670 dtex
 1500g/m² HYPALON

GENERAL

Fuel 2 x 80 liter Petrol
 Steering Hydraulic
 Electrics 12 V.
 Lifting 4 Leg Sling