



**WORK
RIBS**



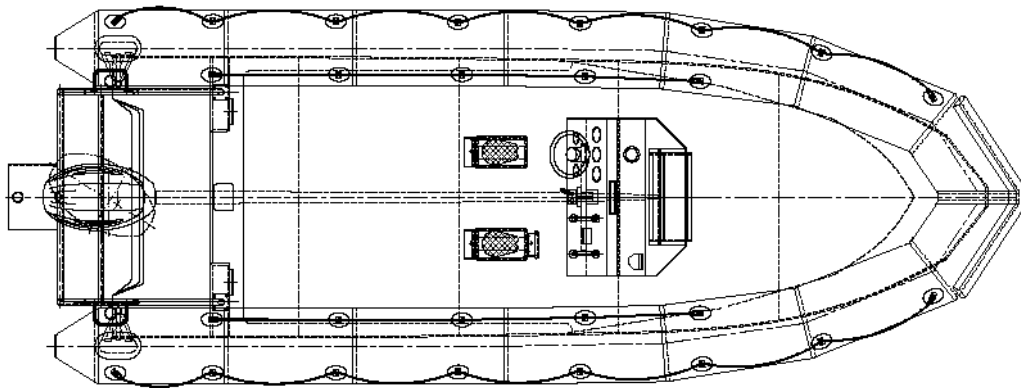
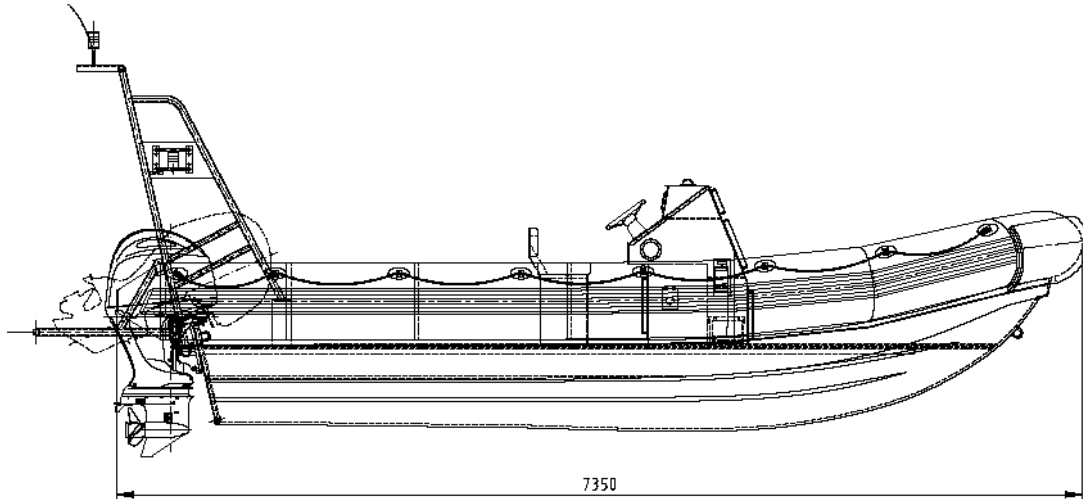
Workribs Holland



**WRH 735 Industrial
Outboard Series**



FOR HEAVY DUTY DEMANDS



CAPACITY

Maximum number of persons	19
Maximum load	1900 kg
Useable deck area	9,75 m ²
Volume buoyancy tube	3,50 m ³

DIMENSIONS/ WEIGHT

Overall length	7,35 m
Inside length	6,40 m
Overall beam	2,80 m
Inside beam	1,65 m
Weight empty incl. fuel excl. engine(s)	1625 kg
Maximum engine(s) weight	450 kg
Buoyancy tube diameter	0,57 m
Number of buoyancy tube compartments	7

PROPULSION

Outboard engine(s)	single or twin
Minimum engine power	85 kW/ 115 hP
Maximum engine power single	202 kW/ 275 hP
Maximum engine power twin	2x 100 kW/ 135 hP

CONSTRUCTIONS

Hull	GRP
Tube	1670 dtex 1500g/ m ² hypalon coated neoprene
Console	Coated seawater resistant aluminium
Seating arrangement	Coated seawater resistant aluminium

GENERAL

Fuel	Unleaded petrol (300L/ 80 US gal.)
Steering	Hydraulic
Electrical systems	12 Volts DC

PERFORMANCE

Maximum speed	40 knots
Average range/ operating hours	150 Nm/ 8 h (@cruising speed)



Standard part and accessories list outboard Industrial Series

Tube	635	685	735	785	835
Commercial heavy duty tube	s	s	s	s	s
All available standard colours	s	s	s	s	s
Full foam tube	o	o	o	o	o
Foam air tube	o	o	o	o	o
Pressure safety valves (set 5pc.)	s	s	n/a	n/a	n/a
Inflation valves (set 5pc.)	s	s	n/a	n/a	n/a
Inflation valves (set 7pc.)*	n/a	o	s	s	s
Pressure safety valves (set 7pc.)*	n/a	o	s	s	s
Safety chambers(5pc.)	s	s	n/a	n/a	n/a
Safety chambers (7pc.)	n/a	o	s	s	s
Double rubbing strake black	s	s	s	s	s
Extra rubbing strake black	o	o	o	o	o
Tube transom straps (set 2pc.)	s	s	s	s	s
Bow protector	s	s	s	s	s
Life line inside	s	s	s	s	s
Life line outside	s	s	s	s	s
Paddle holders (Inc. wooden paddle set 2pc)	o	o	o	o	o
Non-skid on top of tube	o	o	o	o	o
Rescue cradle attachment (set 2pc.)	o	o	o	o	o
Reflection tape	o	o	o	o	o
Characters capital letter	o	o	o	o	o
Storage bag (mounted on tube)	o	o	o	o	o
Grabbing handle (neoprene)	o	o	o	o	o

s = Standard o = Option n/a = Not Available * Only in combination with 7 chambers

Hull	635	685	735	785	835
Commercial heavy duty hull	s	s	s	s	s
All available colours	s	s	s	s	s
Granulate non-skid deck	s	s	s	s	s
Stainless towing eye 1x front 2x aft	s	s	s	s	s
self-bailer hose, round 100 (set 1pc.)	s	s	s	s	s
Freeman hatch in deck ¹	n/a	o	o	o	o
Strap down U bold (storage bow box)*	o	o	o	o	o
Reflection tape	o	o	o	o	o
Storage bow box	o	o	o	o	o
Waterproof under deck cable routing	s	s	s	s	s
Lifting eyes with lifting sling (set 4pc.)	o	o	o	o	o
Single fuel tank under deck 300l 80 US gal.	n/a	n/a	s	n/a	n/a
Single fuel tank under deck 350l 92 US gal.	n/a	n/a	n/a	s	n/a
Single fuel tank under deck 400l 105 US gal.	n/a	n/a	n/a	n/a	s
Electronic fuel sensor and meter	s	s	s	s	s
Fuel water separating filter	s	s	s	s	s
One way breather with shutoff valve	s	s	s	s	s

s = Standard o = Option n/a = Not Available * Only in combination with storage bow box

¹ All the freeman hatches will be placed above watertight compartments in the GRP hull with drain plug

Standard part and accessories list outboard Industrial series

Console and seating	635	685	735	785	835
Jockey console 3 persons*	s	o	n/a	n/a	n/a
Backrest 3x	s	s	n/a	n/a	n/a
Neoprene backrest and seat cushions	s	s	n/a	n/a	n/a
Fuel tank in Jockey console 225l 53 US gal. (3 pers.)	s	s	n/a	n/a	n/a
Electronic fuel sensor and meter	s	s	s	s	s
Grabbing handle on jockey console	s	s	n/a	n/a	n/a
Throttle base single and twin engine configuration	s	s	s	s	s
Compass mounted on console	s	s	s	s	s
Pilot and navigator console*	n/a	n/a	s	s	s
Grabbing handle on pilot console	n/a	n/a	s	s	s
Hydraulic steering system	s	s	s	s	s
Single pilot seat	n/a	n/a	s	s	s
Single navigator seat with backrest and grabbing handle	n/a	n/a	s	s	s
Extra single pilot seat with backrest	n/a	n/a	o	o	o
Extra single navigator seat with backrest and grabbing handle	n/a	n/a	o	o	o

s = Standard o = Option n/a = Not Available * Coated seawater resistant aluminium

Single engine and rigging	635	685	735	785	835
115 HP Yamaha*	s	o	o	n/a	n/a
130 HP Yamaha*	o	s	o	o	n/a
175 HP Yamaha*	o	o	s	o	o
200 HP Yamaha*	n/a	o	o	s	o
250 HP Yamaha*	n/a	n/a	n/a	o	s
Other single engine types*	o	o	o	o	o
Twin engines*	o	o	o	o	o

s = Standard o = Option n/a = Not Available

* Check the specifications for the minimum and the maximum Horsepower's from our work ribs

n- Frame	635	685	735	785	835
Double n-frame 40x5mm	s	s	n/a	n/a	n/a
Double n-frame 50x5mm	n/a	n/a	s	s	s
Navigation light protection bar	s	s	s	s	s
Antenna/ top light platform	s	s	s	s	s
Top light base	s	s	s	s	s
Double n-frame 40x5mm with self-righting system	o	o	n/a	n/a	n/a
Double n-frame 50x5mm with self-righting system	n/a	n/a	o	o	o
VHF antenna	o	o	o	o	o
GPS antenna	o	o	o	o	o
Deck lights	o	o	o	o	o
Radar reflector	o	o	o	o	o

s = Standard o = Option n/a = Not Available

Standard part and accessories list outboard Industrial Series

Electrical	635	685	735	785	835
Led navigation lights (red/green/white)	s	s	s	s	s
Spare led bulb	o	o	o	o	o
Waterproof electrical distribution box	s	s	s	s	s
Single battery system	s	s	s	s	s
Main switch	s	s	s	s	s
Backup battery system. battery, battery box, emergency switch*	o	o	o	o	o
Waterproof fuse box (5 fuses)	s	s	s	s	s
Waterproof fuse box (7 fuses)	o	o	o	o	o
VHF (antenna included)	o	o	o	o	o
External loudspeaker VHF	o	o	o	o	o
GPS top mound	o	o	o	o	o
GPSMAP 7 inch screen	o	o	o	o	o
Deck lights (set 2pc.) mounted on frame ¹	o	o	o	o	o
Handheld search light ¹ mounted on console	o	o	o	o	o
Waterproof switch (1 pc)	s	s	s	s	s
Horn ¹	o	o	o	o	o

s = Standard o = Option n/a = Not Available * Standard on twin engine

¹ waterproof switch and indication plate included

General	635	685	735	785	835
Foot pump	s	s	s	s	s
Paddles adjustable	s	s	s	s	s
Tube repair kit	s	s	s	s	s
Toolkit	s	s	s	s	s
Jason cradle large	o	o	o	o	o
Jason cradle small	o	o	o	o	o
SOLAS package	o	o	o	o	o
User's manual	s	s	s	s	s
Spare-parts list	s	s	s	s	s
Electrical inflation pump	o	o	o	o	o
Overall cover	o	o	o	o	o
Console cover	o	o	o	o	o
Fire extinguisher 2kg	s	s	s	s	s

s = Standard o = Option

Note! If our standard configuration don't match your needs please check our custom builds.